



**WELCOME**

**TO**

**ORIENTATION  
PROGRAM**

**20-04-2017**

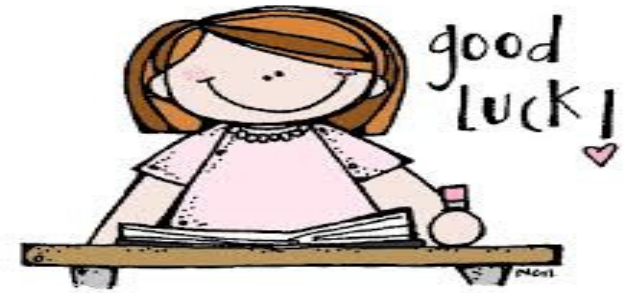


www.orientaltrading.com

# **Agenda points**

- **WHAT IS NEW?**
- **PATTERN OF ASSESSMENT**
- **SCHOLASTIC AND CO-SCHOLASTIC ASSESSMENT**
- **STUDENTS DISCIPLINE AND PARENTS ROLE**

## WHAT'S NEW ???



- ❖ For classes 1 to 5 a pen paper test will be taken at the end of each term.
- ❖ Dates of the assessment will be promulgated.
- ❖ For classes 4 & 5 important concepts of term I&II will also be included for term III.

## 4. The breakup of marks will be as follows



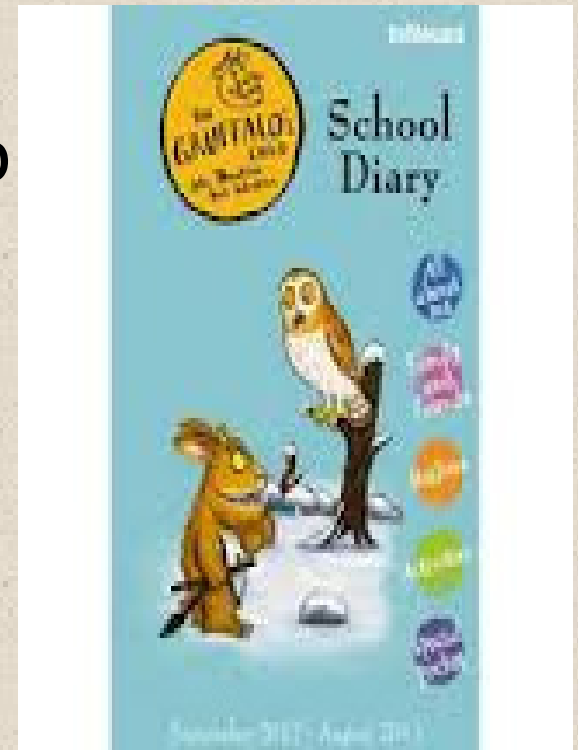
<b>• CLASS</b>	<b>TERM I</b>	<b>TERM II</b>	<b>TERM III</b>
• CLASS 1	10	10	10
• CLASS 2	10	10	10
• CLASS 3	20	20	30
• CLASS 4	30	30	50
• CLASS 5	30	30	50

# SCHOOL TIMINGS

- The timings for classes I – X are:
  - 0730 – 1355 hrs.
- School gates will be closed at 0735hrs
- Assembly will start at 0740hrs

## SCHOOL DIARY

1. School diary is to be brought to the school every day by the child.
2. Parents should check and sign the diary everyday.



# ADDRESS

4. Change of address to be informed through diary.



## **PHONE NUMBER**

5. Change of phone number to be immediately corrected in the diary, also inform the teacher.
6. If both the parents are working, emergency contact number to be given in the diary.





# CCA

7. CCA activity to be noted from diary calendar and encourage your child for more participation.





# BOOKS AND TIMETABLE

8. Send the textbooks , notebooks , computer book, drawing book, colours , music book etc according to timetable.



# UNIFORM



- Uniform to be checked daily –  
Neat uniform, Polished shoes,  
Socks, Belt, Proper haircut and Trimmed nails.
- Girl's hair to be neatly clipped or plaited.
- Children of classes I – III will have to wear Rex gola shoes with velcro strap.
- IV & V class students will have to wear Rex gola shoes with lace.
- Navy blue socks on regular days.
- White socks with House colour band on Wednesdays.
- PT White canvas shoes will be used no more.



# ATTENDANCE

12. Students to be at home in case of illness.
13. Regular attendance to school is essential, minimum **75%** in academic year. Avoid long leaves.



# PROJECTS / ASSIGNMENTS

14. Please ensure submission of projects, home works and notebooks for correction on time.





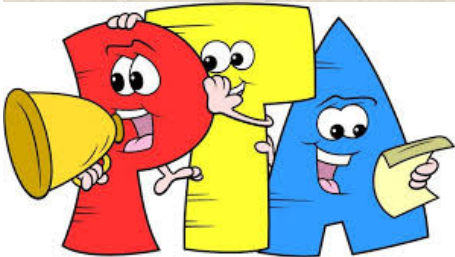
## PTIS



15. Attendance of parents for all the PTI's is mandatory to collect the report cards of their ward and to interact with the teacher with regard to their ward's performance

16. We request more of father's participation in all the three term PTI's.

Parents are exhorted not to walk into the classes during school hours. Instead they can meet the concerned teacher on the working Wednesday after 1400 hrs or 1<sup>st</sup> & 5<sup>th</sup> Saturdays of the month.





# FOOD AND TIFFIN

17. Nutritious food to be sent in student's tiffin.

18. Two tiffins :

1<sup>st</sup> break tiffin : Nutritious food like chapati , idli, upma etc....

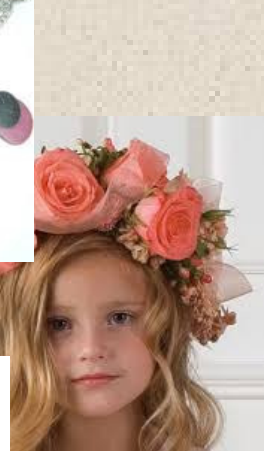
2<sup>nd</sup> break tiffin : salad or some fruits like banana, apple , grapes....

19. Please avoid causing inconvenience by handing over tiffin boxes to watchman or ayahs.



# PROHIBITED !!

20. Wrist bands, fancy jewellery or fancy watches , cell phones , flowers and make up are strictly prohibited in school.
21. The school bears no responsibility for articles lost in the school.
22. Distribution of gifts to children and teachers on birthdays is strictly prohibited.





# CLUB ACTIVITIES

- Club Activities will be conducted on every Friday for classes III, IV and V

Class : III	Class : IV	Class : V
Prakriti Club Page Turners Club Rangmanch Club Sports Stars Club Kalakriti Club Symphony Club	Prakriti Club Page Turners Club Rangmanch Club Sports Stars Club Kalakriti Club Symphony Club Kalakshetra Club Wellness Club	Prakriti Club Page Turners Club Rangmanch Club Sports Stars Club Kalakriti Club Symphony Club Kalakshetra Club Comp Techies Club

Thank  
You